

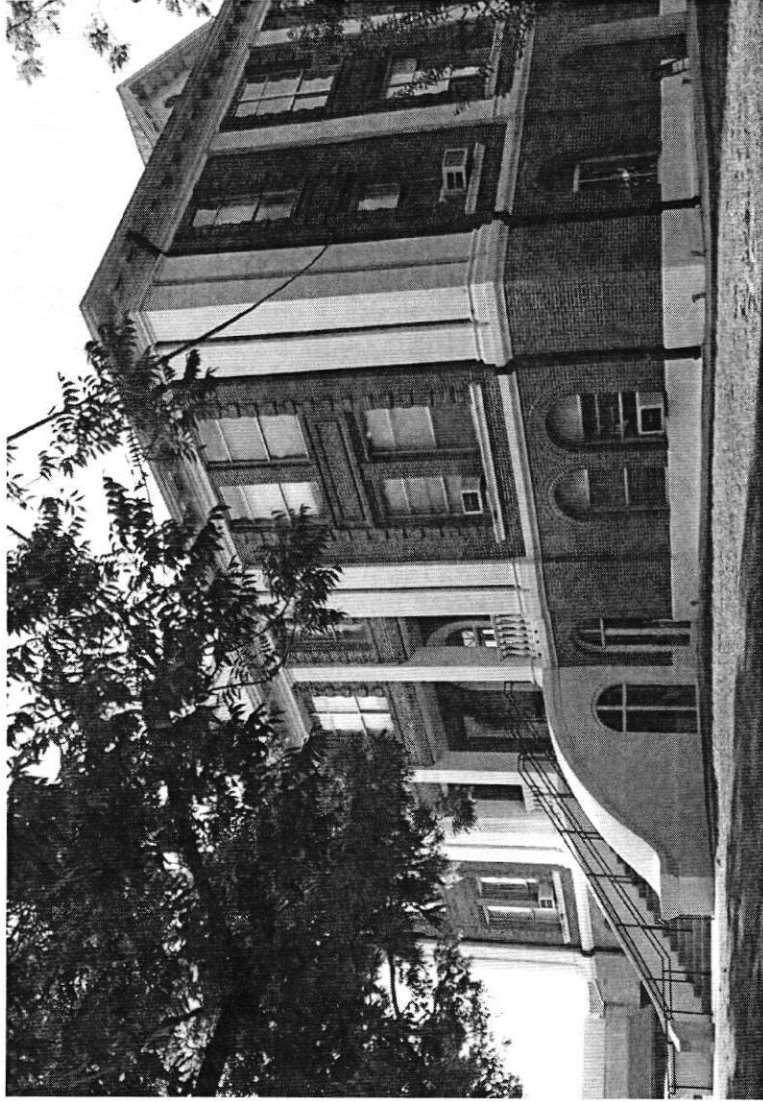
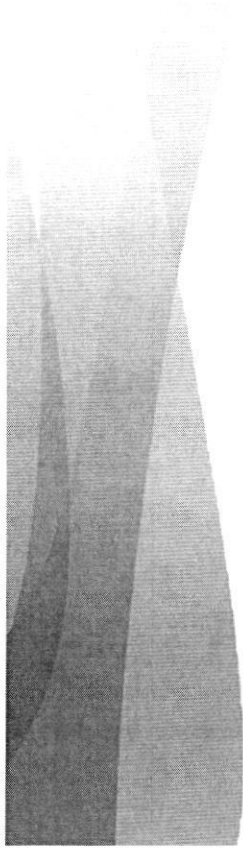
Bridging Digital Divide with Broadband Sabine County can Count on Kinetic

Luc Sanderson, Director – Field Operations
Mike Hunsucker, VP – State Government Affairs
July 16, 2021



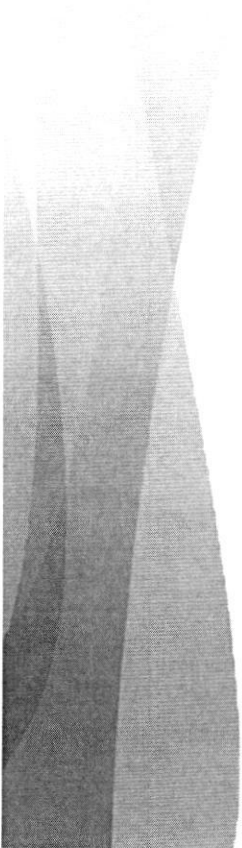
kinetic
by windstream





Community leaders are seeking solution partners with the agility and expertise to meet their unique needs.

Count on Kinetic
to be that partner.



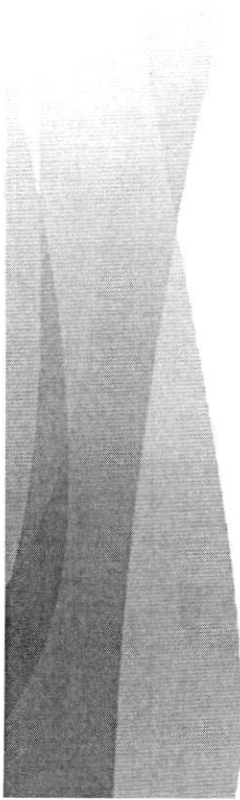
Why Fiber?

Fiber Internet provides future-proof internet connections that enable your community's growth plans and improve quality-of-life.



- ✓ **Ultra-fast speed**
- ✓ **Superior reliability**
- ✓ **Exceptional security**
- ✓ **Scalability to grow with your community**

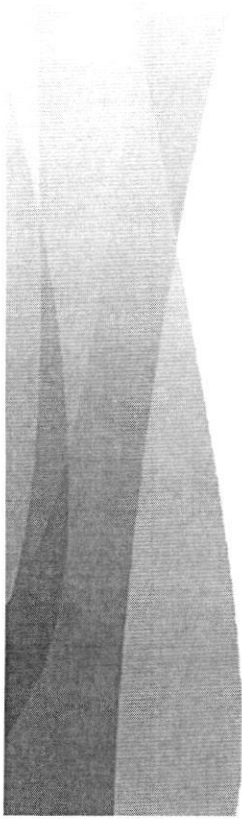
So your residents can keep pace with both classroom and remote learning challenges, and access real-time telemedicine and other innovative technologies.



Kinetic deploys three primary last mile technologies today

Technology	Speeds Offered	Considerations
Fiber to the Home (FTTH)	1 Gbps Symmetrical	<ul style="list-style-type: none"> - Fastest, most reliable, and most future-proof connection available - Offers symmetrical speeds - Requires overbuild of existing copper last-mile network with fiber cable
Fixed Wireless	Up to 100mbps download Up to 20mbps upload	<ul style="list-style-type: none"> - Eliminates the need for last-mile cable, which makes it an inexpensive option for rural areas in some circumstances - Requires line of sight and is heavily influenced by topography – trees and hills can block signals and limit its reach
DSL	Up to 100mbps download Up to 20mbps upload	<ul style="list-style-type: none"> - Utilizes existing copper last-mile network, which is an end-of-life technology with no major technological advancements remaining - Applicable in targeted circumstances but will be mostly obsolete within the decade

- Application**
- **FTTH:** Best long-term choice in most instances
 - **Fixed Wireless:** Good choice in rural areas with open terrain and modest density
 - **DSL:** Limited instances where fiber is nearby an unserved area



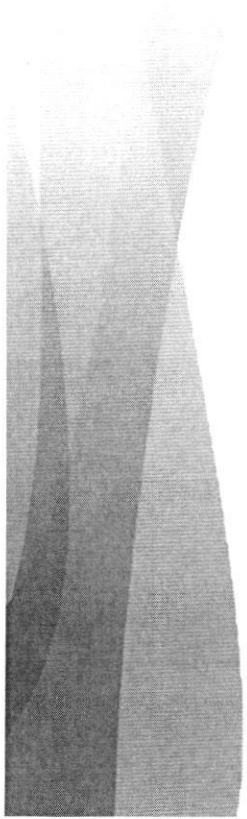
The Kinetic Approach & Philosophy

Lead Communities Through Technology Transformation

We solve the most complex networking and communication challenges for communities of all sizes. We bring deep industry expertise, a collaborative approach and proven success deploying **next-generation network technology**.

By Being Partners and Pathfinders

We are **highly knowledgeable and responsive**, always meeting communities on their terms. We seek **new and better answers**, based on your community's unique needs.




kinetic

Kinetic Households to be Served in
Sabine County, Texas

Total Kinetic Households	9,803
Households Won by Kinetic or other bidders in RDOF Auction	1127
Households in NTIA Private/Public Proposal	5414
Households NOT deemed underserved (25M/3M)	3262

Estimated Cost to Serve Remaining Kinetic Households with Gig	\$17,500,000
Estimated Cost per Served Household	\$3,230
Estimated Route Miles of Fiber Required	320
Estimated Fiber Cost per Route Mile	\$54,752

*Boxes 2 through 4 equal the total HHs of Sabine County

Why Now?



- **Unprecedented Federal & State Funding Coming to close the Urban/Rural Divide**

- States are Creating Funds to Support Build Programs with State Investment
- The Federal Government is Allocating ~ \$2 Trillion of Infrastructure Funding. Broadband funding alone from this allocation is projected to be over \$100 Billion.
- Communities Need a Partner To Put those dollars to work for Broadband investment as opposed to road moves, water projects, etc.
- NTIA Federal Grant Opportunity
- Kinetic Will Be that Partner

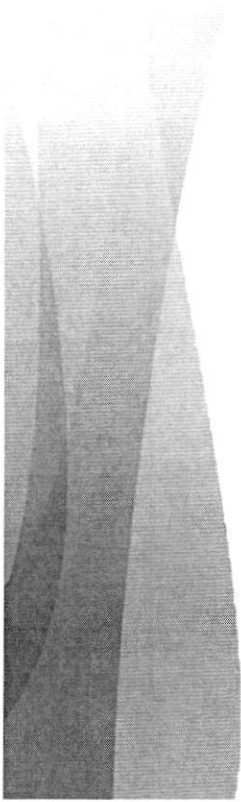
- ***Kinetic's Community Engagement***

- *Bridges our Local Strategy with Funding Partnership Opportunities to Bring Fiber to Rural Kinetic Communities.*

NTIA Grant Program – Funding Overview



- **Funding:** \$288,000,000: range for awards - \$5,000,000 - \$30,000,000 – not strict, can request funding outside this range
- **Eligible Service Area:** Census blocks which lack 25/3 to at least one household
- **Speed:** 25/3 to 100% households in eligible service area
- **No Funding Match:** NTIA favors projects that applicants contribute at least 10% project cost, can include in-kind contributions
- **Period of Performance:** – within one year of receipt of grant funds – may request extension
- **Application Deadline:** – Aug 17, 2021 - Grants.gov website (www.grants.gov).
- • Expected Selection by Nov 15, Awards Starting Nov. 29
- **Grant Eligibility:** a covered partnership is eligible.
 - Covered Partnership - partnership between (A) a state or political subdivision and, (B) a provider of fixed broadband service.
 - Government entity must serve as lead applicant and assume primary operational and financial responsibility for completing the project.



NTIA - Priorities

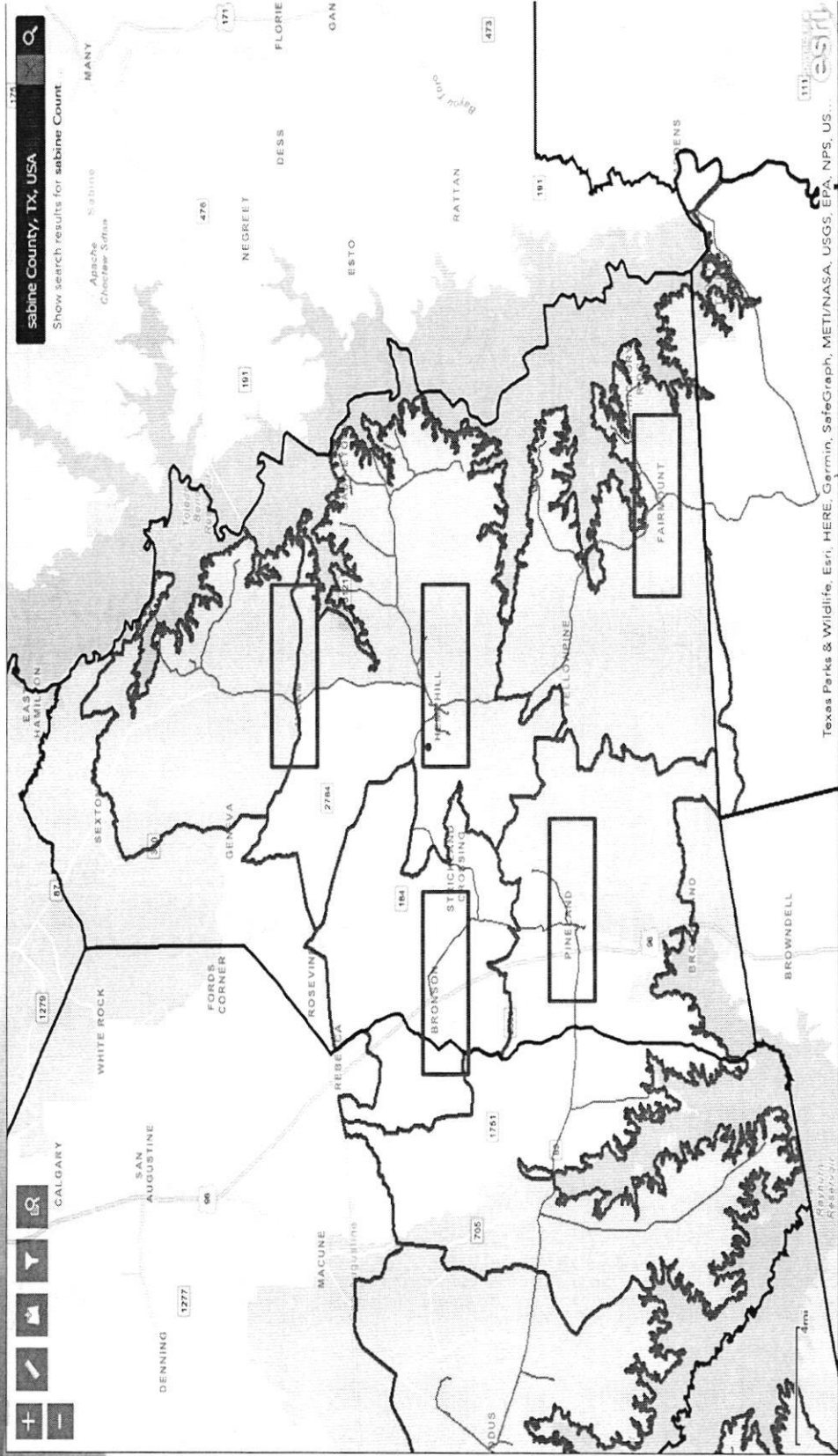
- **Priority:** in decreasing order of priority:
 1. Greatest number of households in an eligible service area.
 2. Eligible service area that is wholly within any area other than (i) a county, city, or town that has a population of more than 50,000 inhabitants; and (ii) the urbanized area contiguous and adjacent to a city or town
 3. Projects that are the most cost-effective, prioritizing such projects in areas that are the most rural.
 4. Broadband service with 100/20 speeds; but encourages fiber projects.
 5. Any other covered broadband project that meets the requirements of this subsection.

NTIA will sequence all applications that address priority one first and to the extent that funding remains will then sequence applications that address priority two... and continue until it has awarded all available funding.



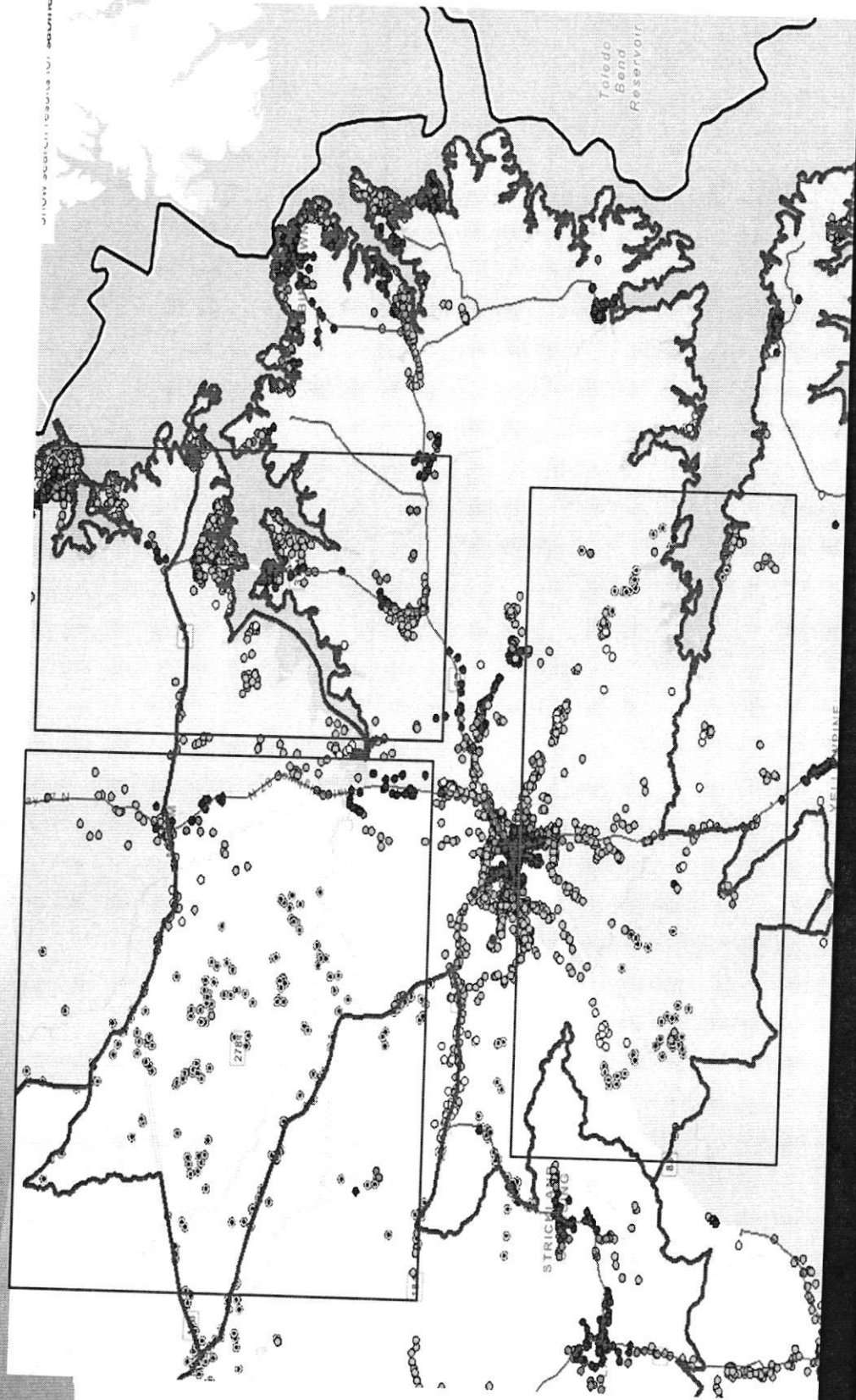
kinetic
by Windstream

Sabine County

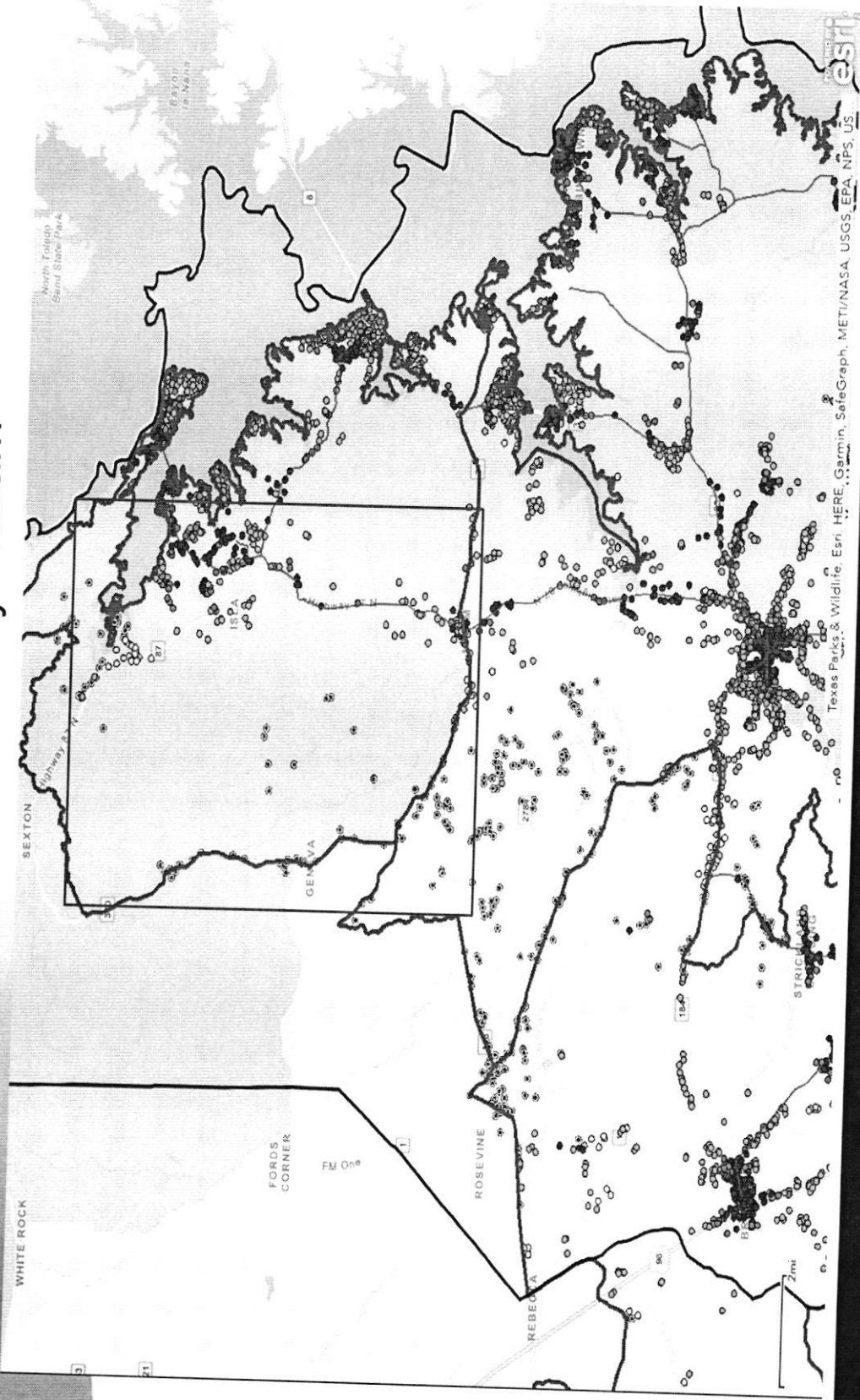


Texas Parks & Wildlife, Esri, HERE, Garmin, SafeGraph, METI/NASA, USGS, EPA, NPS, US, ESRI

Sabine County - Hemphill

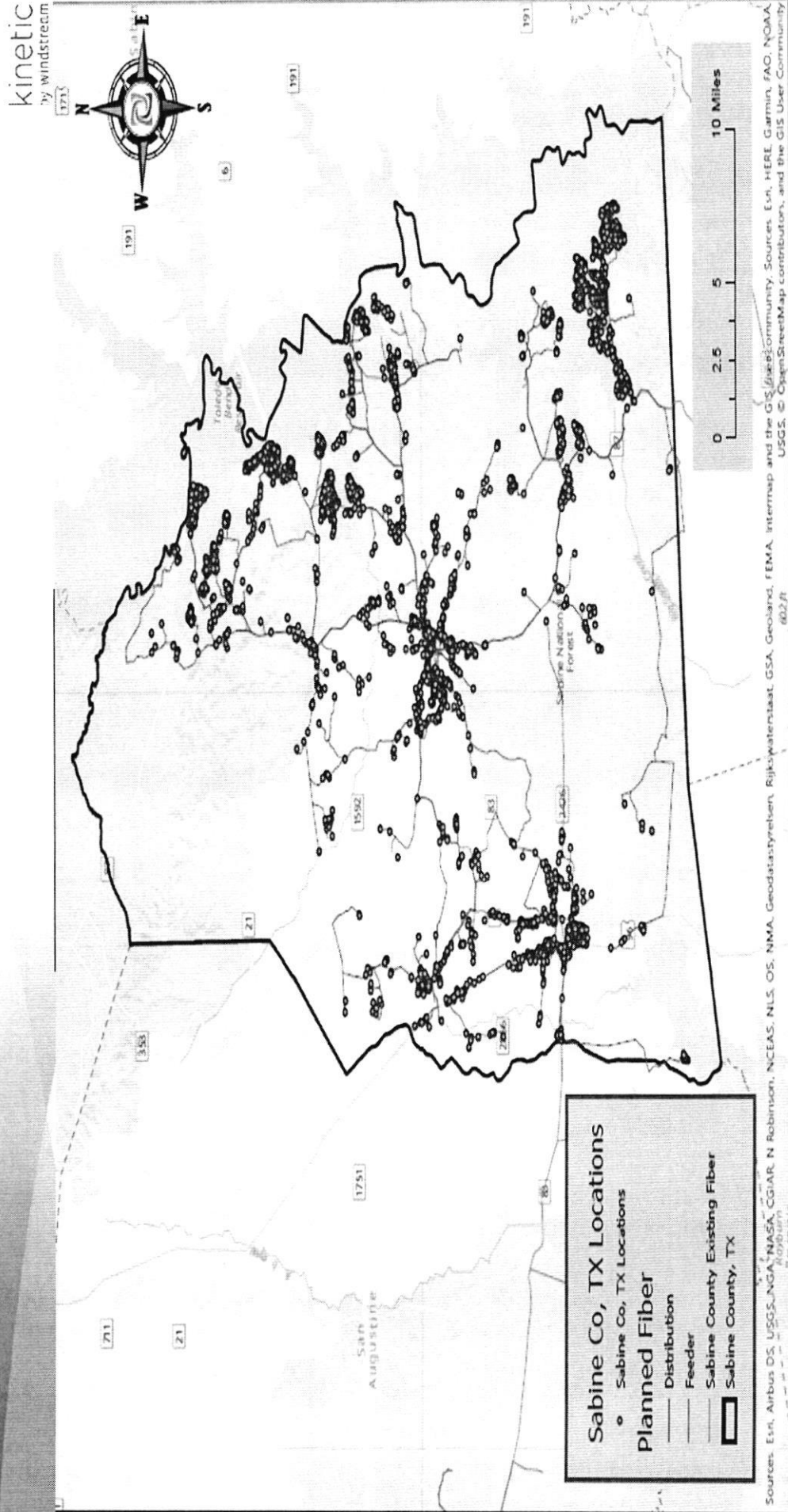


Sabine County - Milam



esri
Texas Parks & Wildlife, Esri, HERE, Garmin, SafeGraph, METI/NASA, USGS, EPA, NPS, US

Sabine County – Stage 1 Fiber Plan/Coverage



Sabine Co, TX Locations

- Sabine Co, TX Locations

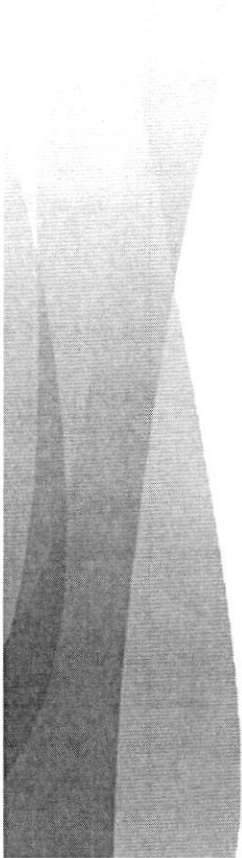
Planned Fiber

- Distribution
- - - Feeder

Sabine County Existing Fiber

Sabine County, TX

Sources: Esri, Airbus DS, USGS, NGA, NAE, CGIAR, N Robinson, NCEAS, NLS, OS, NMA, Geodatasystemen, Rijkswaterstaat, GSA, Geoland, FEMA, Intermap and the GIS User Community, Sources: Esri, HERE, Garmin, FAO, NOAA, USGS, © OpenStreetMap contributors, and the GIS User Community 03/2/11



What's next?



kinetic
by windstream.